

2 Channel High Definition(720P) Car Digital Video Recorder H.264 — FHD4130

Product Instruction

This product adopt the current most advanced A7 processing chip with long-range high definition signal transfer technology LVDS, 1.3 million pixel high definition digital sensor and wide angle, the video quality is up to 720P.



SPECIFICATION

Solution	Coro Logic CLM9722
Front Sensor	HD CMOS Video Image sensor 1/4-inch NT99141
Rear Sensor	HD CMOS Video Image sensor 1/4-inch NT99141
Front And Rear Lens	140° wide viewing angle
Resolution	Front:720P(1280×720) 30fps & Rear:720P(1280×720) 30fps
Video Format	AVI(H.264)
G-Sensor	Built-in G-sensor
GPS Receiver	Extend With 1.5meters Cable(Optional)
Remote	IR Remote Controller
Memory	Micro-SD(Max Support 32G)
Socket	AV-OUT/GPS/Rear CAM-IN/Front CAM-IN
Audio	Built-in Microphone/Speaker
Power Supply	Built-in Battery(550mA) 9-16V DC Input
Operating Temp	-10°C~60°C

Features

Assist parking and driving function:

At the beginning of parking, the system will show rear view picture on DVD automatically. Once finishing the parking, it will show both front view and rear view picture, after 15 seconds the picture will be off. It also can trigger or turn off the picture on DVD by remote control. 120° high definition lens could clear up the driving blind area.

Real time Car driving record :

After ACC on (start the car), the video recording will be trigger automatically, front and back view record file will be storage into TF card.

G-Sensor collision record automatically functions:

When the car meets collision or brake emergency, the record file will be locked and save the file for 30 second.

Manual record locks function:

When pressing the button of manual record, current file will be locked and save special file folder and it won't be delete unless unlock the file.

Lane departure warning system:

When LDWS function is on, and the road is with lane, if the car is departures from the lane, the system will be warning by picture on screen and sound so as to remind the driver to avoid traffic accident; with the combination of GPS function, it will be trigger since the speed up to 60KM.

Parking Mode function:

After 5 minutes of ACC off (Stop the car), the parking mode is on, motion detection and G-sensor is trigger. Once the camera detects the picture movement within 3.5 meters or the car is vibration, the record is start.

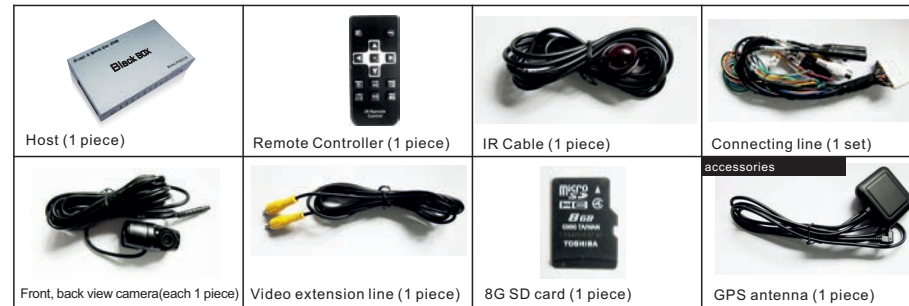
Intelligent battery voltage detection function:

When it is on parking mode, the intelligent battery voltage detection function is on. Once it is under 11.8V, the system will save current video file and be off automatically.

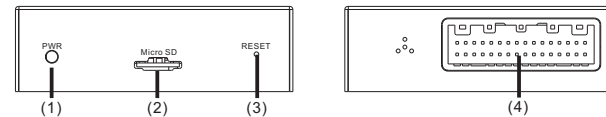
GPS driving tracking function:

When connecting the external GPS antenna, the system will record the driving tracking. When the record file play on special player, the driving tracking will be replay on Google map. Because the GPS module needs initialise, please put it on open fields and keep some time to receive signal when it is first usage.

Package list

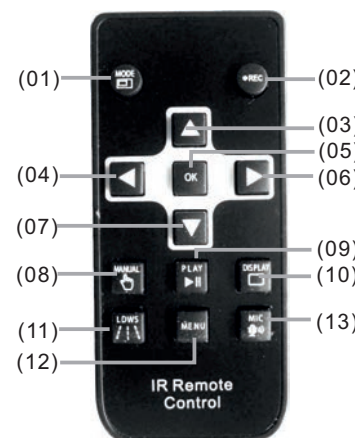


The host instruction



- (1)PWR power indicator: the power indicate: Turn on power and the light always on, electricity out and Light Off;
- (2)SD Card: Standard Micro TF card
- (3)RESET KEY: The machine down, press RESET key hardware reset, the machine will auto restart
- (4)Power and Trigger: Including BAT+, ACC+, GNG, Trigger: Reversing the trigger line. Original car screen trigger line; Camera input and display output interface; (Video in & out)Main including dual cameras interface and video output interface; Microphone interface; Microphone can be add also can be build (Option); IR remote controller interface and GPS interface.

IR remote controller Introduction



- (01)MODE key: Big image is front view, small is rear view. Press mode key to switch front and rear view, press one more time show the front view image, then press switch rear vie image, then press switch to the first image.
- (02)REC key: stop or start record.
- (03)UP key: It is for the up function on the menu mode /to choose last video in the replay mode.
- (04)Left key: Select backward speed (2X/4X/8X).
- (05)OK key: 1. enter key used to set up the menu. 2. playback mode for confirm and pause.
- (06)Right key: Select forward speed 2X/4X/8X.
- (07)Down key: It is for the down function on the menu mode /to choose next video in the replay mode.
- (08)Record key: quickly manual record on or off.
- (09)PLAY key: (NO Recording status), in play mode, press the play key to stop (not pause) play, double press to exit the playback mode, press again to exit the preview mode.
- (10)Display key: quickly turn on or off LCD.
- (11)LDWS key: LDWS Function set up key: turn off/turn on/turn on automatically (remark: turn on automatically will be trigger since the speed up to 60 KM/h)
- (12)Menu key: press to enter the menu, press again to go back.
- (13)MIC key: quickly turn on or off the microphone.

Front & Rear View HD Camera



HD200

- Sensor: 1/4-inch Full HD class single chip
- Lens Angle: 140° wide viewing angle
- Resolution: 1280X720@30fps
- Minimum Illumination: <0.5lux
- Power Supply: 4-6.5V DC Input
- Connect: 5 meters wire for front camera, 3 meter wire for rear camera
- Operating Temp: -20°C~85°C

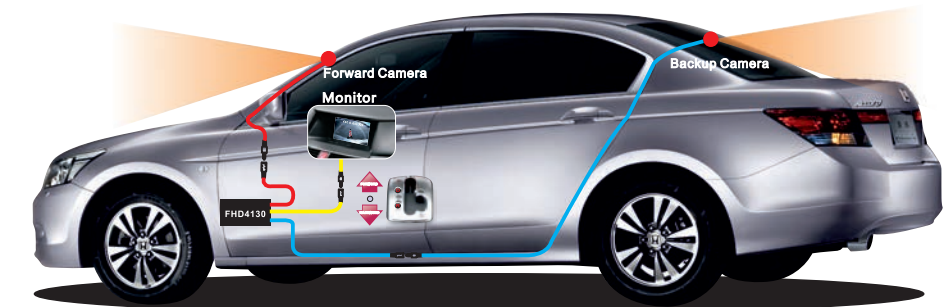


Kindly reminder: Assembly before please clearing the glass, than tear-down 3M glue then hard paste on the glass.

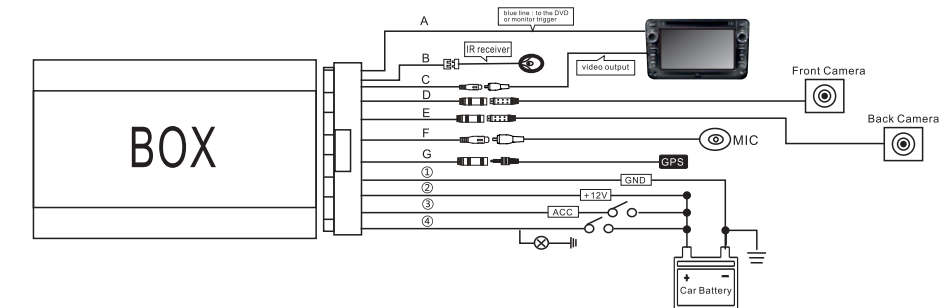
Remark: Suggest assembly the front camera to the middle of glass (do not block the line of sign condition), in order to get the right lane information without mistake.

Alarm: Camera Model HD200 could be rotate, but only support trimming, can not be repeat and rapid rotation, otherwise it will lead to failure of rotate mechanism.

Electrical Connect Instruction



(Attention: Assembly Host and wiring planning, front and back camera connection line and GPS line shall be keeping far away the easy jamming equipment, suggest assembly under the seat).



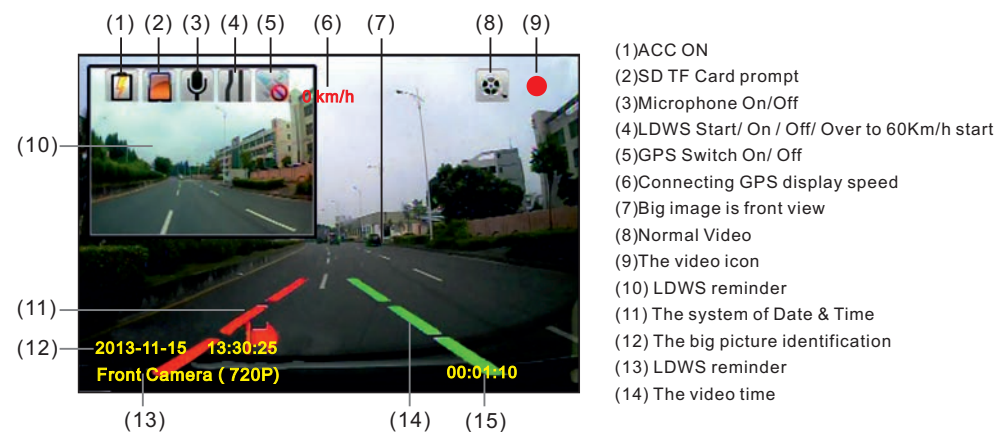
Video output & camera Input:

- A. Blue Cable: connect to DVD or monitor trigger;
- B. Black Port: Remote control
- C. Yellow Port: Video output
- D. Black Port: Front view camera
- E. Black Port: Back view camera
- F. Black Port: White Port: Microphone
- G. Black Port: Black Port: GPS jack

Power cable and trigger cables instruction:

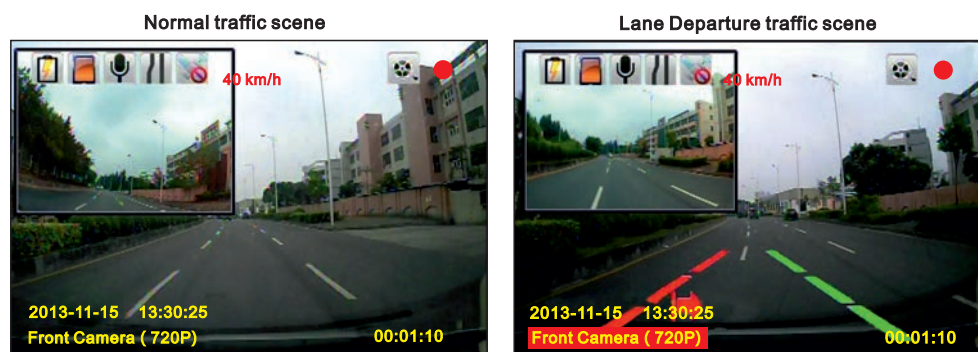
- ① Black Cable: GND;
- ② Yellow Cable: BAT+(+12V);
- ③ Red Cable: ACC ON trigger;
- ④ Green line: connect to rear view camera trigger,

The introduction of the preview page



- (1)ACC ON
- (2)SD TF Card prompt
- (3)Microphone On/Off
- (4)LDWS Start/ On / Off/ Over to 60Km/h start
- (5)GPS Switch On/ Off
- (6)Connecting GPS display speed
- (7)Big image is front view
- (8)Normal Video
- (9)The video icon
- (10) LDWS reminder
- (11) The system of Date & Time
- (12) The big picture identification
- (13) LDWS reminder
- (14) The video time

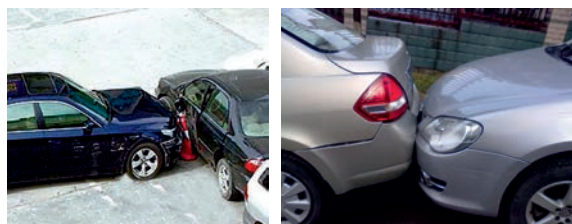
The introduction to the LDWS



The Auto DVD screen not flashing on display, Means the correct driving lane

If turn on the LDWS function, the system will automatically recognize the driving lane marking, when the Auto lane departure, the Image and Sound will reminder the driver, avoid the driver attention not concentration on driving high speed, avoid the traffic accident.
(Remake: Due to the lane marking not clearly or ambient light no enough, the LDWS will report wrong or No remind.

Parking Mode



When ACC switch off, the system enter into parking control mode, motion detection and motion function will start, when the detected within 3.5m are moving image, or car collision motion, the system will automatically start the video recording function.

The system settings

In standby state, press "MENU" to set the data, after menu, press left or right key to select the needed and parameters, after set then press OK key to save current settings, press Down key enter next function settings.



[LDWS Enable] Setting Lane departure reminder; Turn Off/On/Automatically On.(Remark: Automatically On function, means the car speed over to 60Km/h will be automatically start, and need connecting GPS).

[Voice Recording] Microphone function settings; Turn On / Off.

[Motion Sensitivity] Motion sensitivity settings; Turn Off/Low/Mid/High.

[G-Sensor Sensitivity] G-sensor sensitivity function setting; Turn Off/Low/Mid/High.

[Light Frequency] Set: 50Hz/ 60Hz.

[Recording Length] Video file of time setting; 30S / 60S/ 120S.

[TV Type] Video format setting; NTSC / PAL.

[Auto Power Off] Setting the time of Host automatic shutdown; Turn off/ 5 sec / 5 Min.

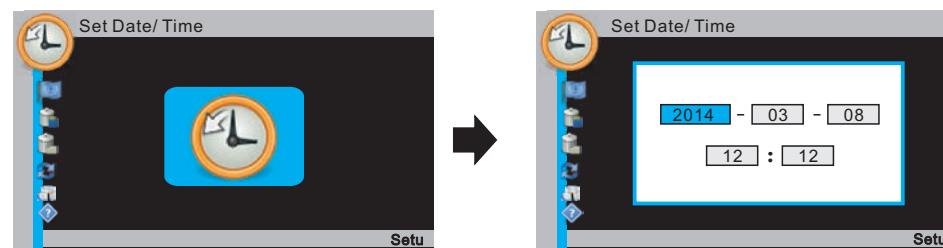
[Auto LCD Off] Set reverse out or after switched will automatically shutdown the screen the timing; Turn off / 3 Sec / 1 Min.

[Display Date/Time] Set display the Host of Date and Time; Turn on/ Turn off.

[Buzzer Beep] Set host prompt sounds; Turn off / On.

[Set Time Zone] Set each country time zone; (remark; after select and set the time zone, the system will automatically restart.

[Set Date/Time] Setting system date &time; select Menu then press OK key enter into Date& Time image, then press UP, Down, "Left", "Right" setting needed. After set then press "OK"key for save, and exit the current screen.



[Set Language] Select the needed language; English/Chinese Simplified/ Chinese Traditional/Italian/ Korean/ Japanese .

[Format SD-Card] To format the SD card; press "OK"key enter into formatting screen, press "Left"or"Right"key to select, if select"Cancle"key then press"OK"key and will start to formatting, select"Cancle"key and press"OK"key sign out the formatting screen.

[Delete INF Files] Delete video file, press "OK"key enter delete screen, press"Left"or "Right"to select, if select"Confirm"then press"OK"key so will delete the video file; Select"Cancle"and press OK key means sign out delete screen.

[Factory Reset] CONFIRM / CANCEL; (remark; select "Confirm" , all the parameters will revised to factory default settings.

[Copy PC Player Installer] Copy player; Assembly Player software from Host copy player to SD card, then to install in computer

[System Version] check the machine for see system version number.

Play Video Files

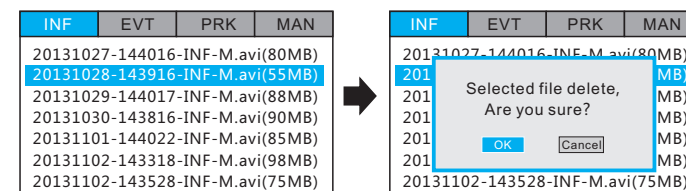
In standby state, press PLAY key enter into video play Menu (as bellowing)
Video files for card capacity (Normal:70%, Events:10% , Parking:10% , Manual : 8%)

INF	EVT	PRK	MAN
20131027-144016-INF-M.avi(80MB)			
20131028-143916-INF-M.avi(55MB)			
20131029-144017-INF-M.avi(88MB)			
20131030-143816-INF-M.avi(90MB)			
20131101-144022-INF-M.avi(85MB)			
20131102-143318-INF-M.avi(98MB)			
20131102-143528-INF-M.avi(75MB)			

Enter Video Menu, Press Left, Right,select The Needed Files
Mode: Normal/events/park/manual. After Select , Press Ok Key To Select "Front Camera" Or "Back View Camera", To Play Video File , During Playback Can Press ◀backward Function 2x/4x/8x . Press ▶ Forward Function 2x/4x/8x .

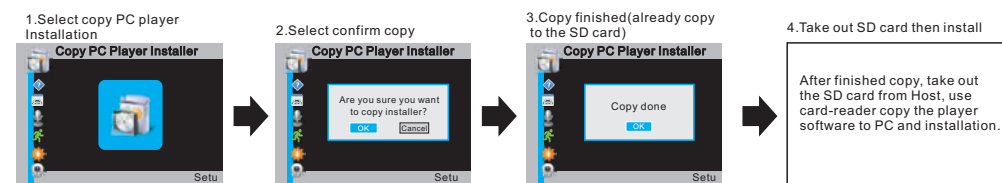
Delete one or more video files

In standby state, press "PLAY" key enter into video play menu(as bellowing), press LEFT, RIGHT , select needed delete file , press "REC" key(delete the single file)/"MODE" key(Delete all files), then press "OK" key confirm the delete files.



Install the player

In standby state, press MENU key enter into system settings screen (as bellowing)



After finished copy, take out the SD card from Host, use card-reader copy the player software to PC and installation.

The player interface



Disclaimer

This product main function is offer driver with driving recording video and car around and road information, and real time display and make recording, to help driver have better safety driving. But because of the complexity of the road, and the driver of the different driving habits, the company does not undertake installing this product related joint and several liability of traffic accident. In any case when the driver, please drive carefully, obey the traffic safety regulations.